



Republic of Rwanda  
Ministry of ICT and Innovation

In partnership with



---

# The Rwanda Economy Digitalisation Programme

---





# About the programme

The Rwanda Economy Digitalisation (RED) Programme supports a sustained shift to an inclusive, digitalised economy.

Cenfri works with policymakers and private sector decision-makers by leveraging insights from data analysis to improve decision-making, catalyse innovation, and ultimately, improve economic opportunities and resilience for Rwandans.

This data-for-decision-making programme is implemented by Cenfri in partnership with the Government of Rwanda and the Mastercard Foundation.

Phase 2 of the RED Programme (May 2024 to April 2027) builds on the achievements of RED1, which was implemented between March 2021 and April 2024.

# Impact of Phase 1

During Phase 1, the programme successfully demonstrated the value of using data insights to inform decision making.

48

Datasets analysed

15

Policy areas influenced

To contribute to the strengthening of the data ecosystem in Rwanda,

9

Data fellows placed

218

Participants in data training

Our data partners during Phase 1 included:



NATIONAL BANK OF RWANDA  
BANKI NKURU Y'U RWANDA

ONE ACRE FUND



Republic of Rwanda  
Ministry of ICT and Innovation

bk TECHHOUSE  
POWERING INNOVATION



Republic of Rwanda  
Ministry of Agriculture and Animal Resources

EAX  
RWANDA EAST AFRICA EXCHANGE

RSA  
Rwanda Space Agency



Republic of Rwanda  
Ministry of Education

rura  
RWANDA UTILITIES REGULATORY AUTHORITY  
Inspiring development

NLA  
National Land Authority



REPUBLIC OF RWANDA  
Ministry of Trade and Industry

RDB  
RWANDA DEVELOPMENT BOARD



# Phase 2

## — Impact goal —

Data-driven policies and decision-making for job creation, poverty relief and economic resilience in Rwanda



### Targeted outcomes

A strengthened data ecosystem in Rwanda creates more data jobs

Private sector partners offer new/inclusive products and services and increase revenue and employment

Improved policies and increased practice of data-driven policy and decision-making by policymakers in Rwanda



### Beneficiaries

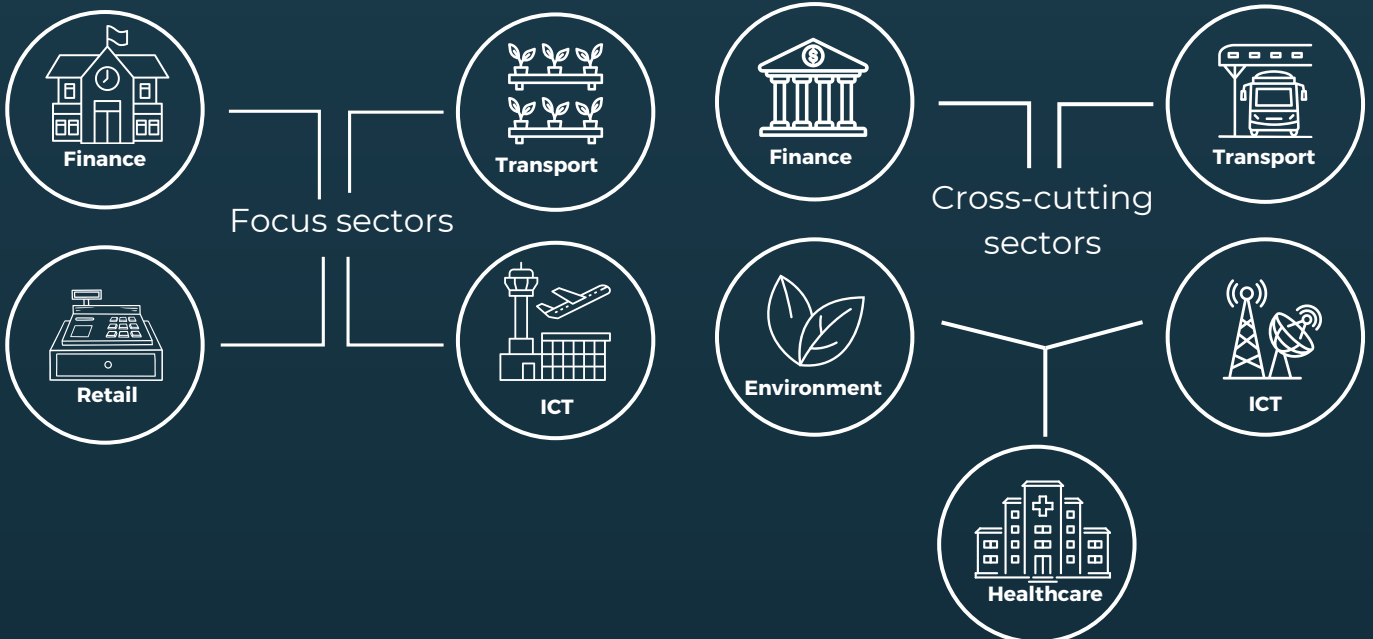
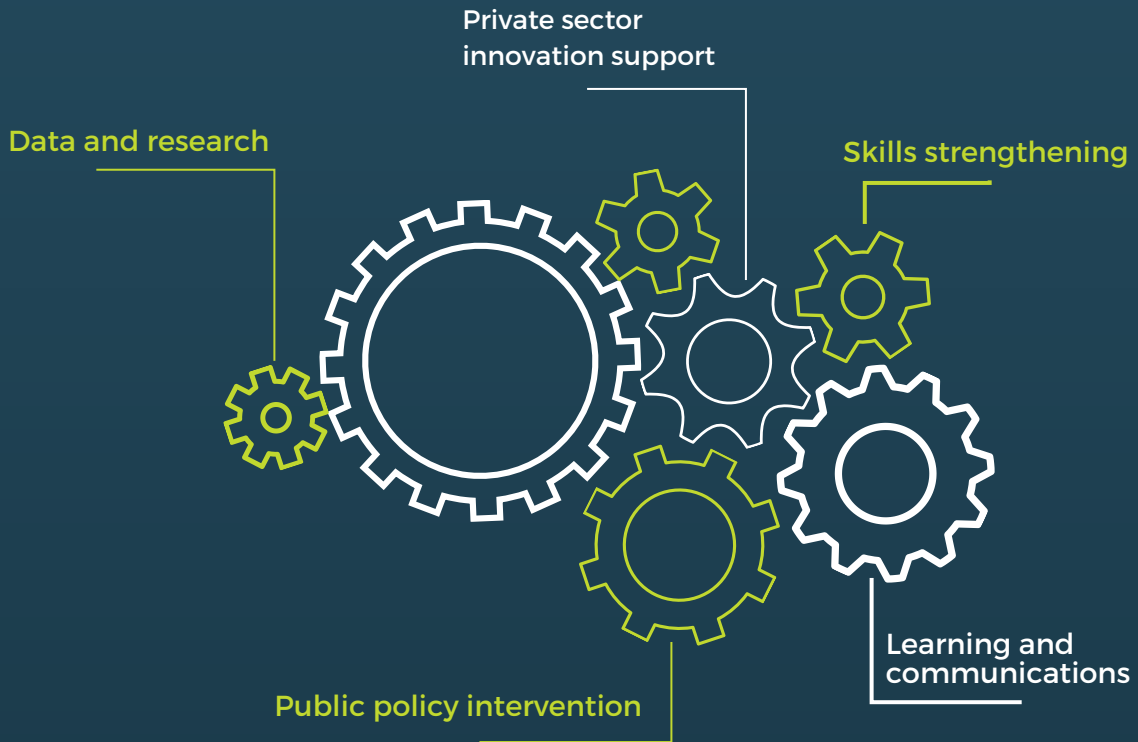
The programme works directly with a range of public and private sector institutions, which range from government ministries to micro and small enterprises.

Indirectly, we want to see all Rwandans, but particularly young people, women, refugees and vulnerable groups, benefit from improved data-driven decision-making.





# Programme interventions





## Policy focus areas



### Food security

How to ensure food security for the next 25 years?



### Private sector investment

How to increase tax revenue through data-driven private sector investment?



### Employment and education

How to ensure that 95% of the workforce is employed in non-elementary occupations by 2050?



### Digital transformation

How to get most of the population and businesses access to high speed, affordable internet by 2050?

## Contact us



+250 079 163 5572



info@cenfri.org



cenfri.org/rwanda

## Implementing partners:

